

Douglas J. Amy

This is Exhibit H to the affidavit of
Douglas Amy, Sworn before me this
day of April, 2001

Notary Public

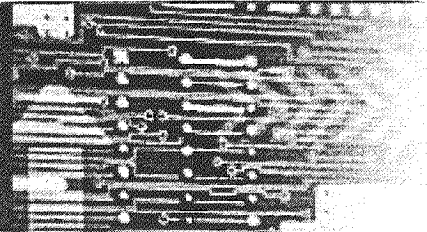
Commonwealth of Massachusetts
Hamshire, S.S. Date 4/13/01
Then personally appeared the above named
DOUGLAS J. AMY
and acknowledge the foregoing instrument
to be his free act and deed, before me,
Margaret A. Notary Public

Lagore

MY COMMISSION EXPIRES
JANUARY 17, 2008



Report of the Chief Electoral Officer of Canada
on the 37th General Election Held on November 27, 2000



www.elections.ca

Table IV.1

Number of ballots cast and percentage of valid votes, by province/territory and political affiliation, preliminary figures – 37th general election, 2000

Province or territory	Bloc Québécois		Canadian Reform Conservative Alliance		Liberal Party of Canada		New Democratic Party	
	Number	%	Number	%	Number	%	Number	%
Newfoundland	0	0.0	8 837	3.9	103 103	44.9	29 993	13.1
Prince Edward Island	0	0.0	3 719	5.0	35 021	47.0	6 714	9.0
Nova Scotia	0	0.0	41 752	9.6	158 870	36.5	104 277	24.0
New Brunswick	0	0.0	60 277	15.7	159 803	41.7	44 778	11.7
Quebec	1 377 727	39.9	212 874	6.2	1 529 642	44.2	63 611	1.8
Ontario	0	0.0	1 051 209	23.6	2 292 075	51.5	368 709	8.3
Manitoba	0	0.0	148 293	30.4	158 713	32.5	101 741	20.9
Saskatchewan	0	0.0	207 004	47.7	89 697	20.7	113 626	26.2
Alberta	0	0.0	739 514	58.9	263 008	20.9	68 363	5.4
British Columbia	0	0.0	797 518	49.4	446 624	27.7	182 993	11.3
Yukon Territory	0	0.0	3 659	27.7	4 293	32.5	4 223	31.9
Northwest Territories	0	0.0	2 273	17.7	5 855	45.6	3 430	26.7
Nunavut	0	0.0	0	0.0	5 327	69.0	1 410	18.3
Total	1 377 727	10.7	3 276 929	25.5	5 252 031	40.8	1 093 868	8.5

Table IV.1 (continued)

Number of ballots cast and percentage of valid votes, by province/territory and political affiliation, preliminary figures – 37th general election, 2000

Province or territory	Progressive Conservative Party of Canada		Others		Valid ballots		Rejected ballots		Total ballots
	Number	%	Number	%	Number	%	Number	%	
Newfoundland	79 157	34.5	8 408	3.7	229 498	99.3	1 680	0.7	231 178
Prince Edward Island	28 610	38.4	400	0.5	74 464	99.4	424	0.6	74 888
Nova Scotia	126 557	29.1	3 813	0.9	435 269	99.5	2 106	0.5	437 375
New Brunswick	116 980	30.5	1 174	0.3	383 012	98.9	4 166	1.1	387 178
Quebec	192 153	5.6	80 891	2.3	3 456 898	97.3	95 653	2.7	3 552 551
Ontario	642 438	14.4	98 174	2.2	4 452 605	99.5	21 396	0.5	4 474 001
Manitoba	70 635	14.5	8 450	1.7	487 832	99.5	2 251	0.5	490 083
Saskatchewan	20 855	4.8	2 515	0.6	433 697	99.7	1 382	0.3	435 079
Alberta	169 093	13.5	16 021	1.3	1 255 999	99.7	3 795	0.3	1 259 794
British Columbia	117 614	7.3	69 972	4.3	1 614 721	99.6	6 380	0.4	1 621 101
Yukon Territory	991	7.5	53	0.4	13 219	99.6	53	0.4	13 272
Northwest Territories	1 282	10.0	0	0.0	12 840	99.4	72	0.6	12 912
Nunavut	633	8.2	349	4.5	7 719	99.3	54	0.7	7 773
Total	1 566 998	12.2	290 220	2.3	12 857 773	98.9	139 412	1.1	12 997 185

Table IV.2
Distribution of confirmed candidates by political party and by province/territory –
37th general election, 2000

Province or territory	Bloc Québécois	Canadian Action Party	Canadian Reform Conservative Alliance	Communist Party of Canada	Liberal Party of Canada	Marijuana Party	Marxist-Leninist Party of Canada
Newfoundland	0	0	7	0	7	0	0
Prince Edward Island	0	0	4	0	4	0	0
Nova Scotia	0	0	11	1	11	3	3
New Brunswick	0	0	10	0	10	1	0
Quebec	75	2	74	12	75	31	26
Ontario	0	39	103	18	103	22	40
Manitoba	0	3	13	7	14	1	0
Saskatchewan	0	3	14	0	14	0	0
Alberta	0	5	26	3	26	3	3
British Columbia	0	18	34	11	34	12	12
Yukon Territory	0	0	1	0	1	0	0
Northwest Territories	0	0	1	0	1	0	0
Nunavut	0	0	0	0	1	0	0
Total	75	70	298	52	301	73	84

Table IV.2 (continued)
Distribution of confirmed candidates by political party and by province/territory –
37th general election, 2000

Province or territory	Natural Law Party of Canada	New Democratic Party	Progressive Conservative Party of Canada	The Green Party of Canada	Independent	No Affiliation	Total
Newfoundland	2	7	7	0	1	1	32
Prince Edward Island	1	4	4	1	0	1	19
Nova Scotia	1	11	11	1	2	0	55
New Brunswick	3	10	10	1	0	0	45
Quebec	19	72	71	17	6	7	487
Ontario	26	103	100	52	9	25	640
Manitoba	0	14	14	3	3	5	77
Saskatchewan	0	14	11	4	0	0	60
Alberta	3	26	26	7	2	3	133
British Columbia	14	34	34	24	6	14	247
Yukon Territory	0	1	1	0	0	1	5
Northwest Territories	0	1	1	0	0	0	4
Nunavut	0	1	1	1	0	0	4
Total	69	298	291	111	29	57	1 808