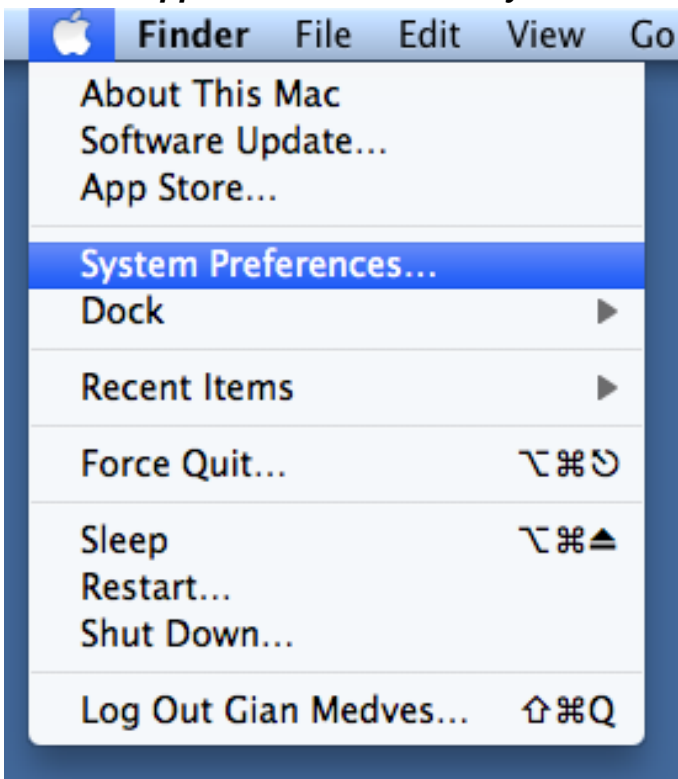


## Bora Laskin Law Library – Wireless Printing Instructions – OS X

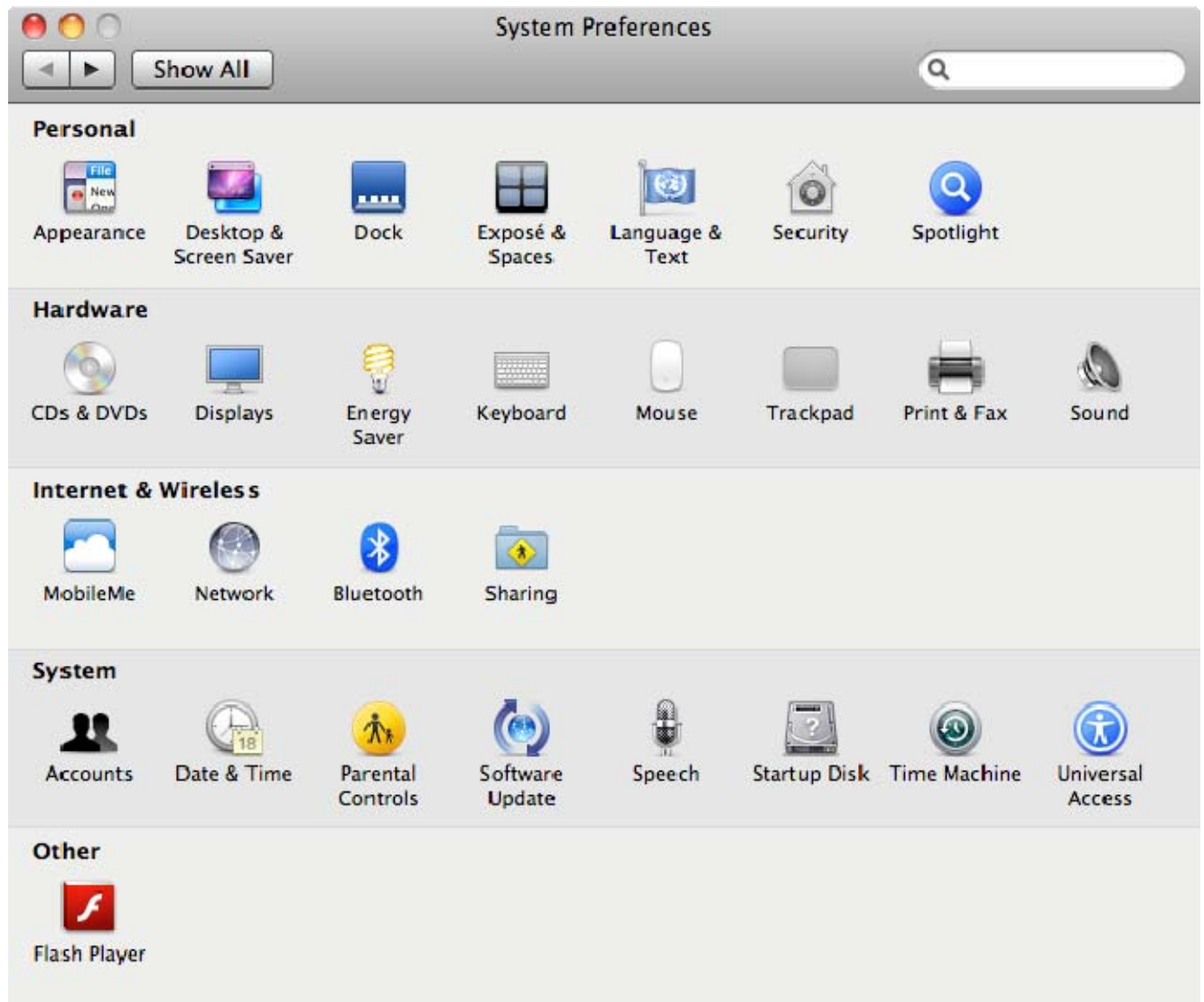
1. Determine your version of OS X by clicking the **Apple menu** and selecting **About This Mac**.



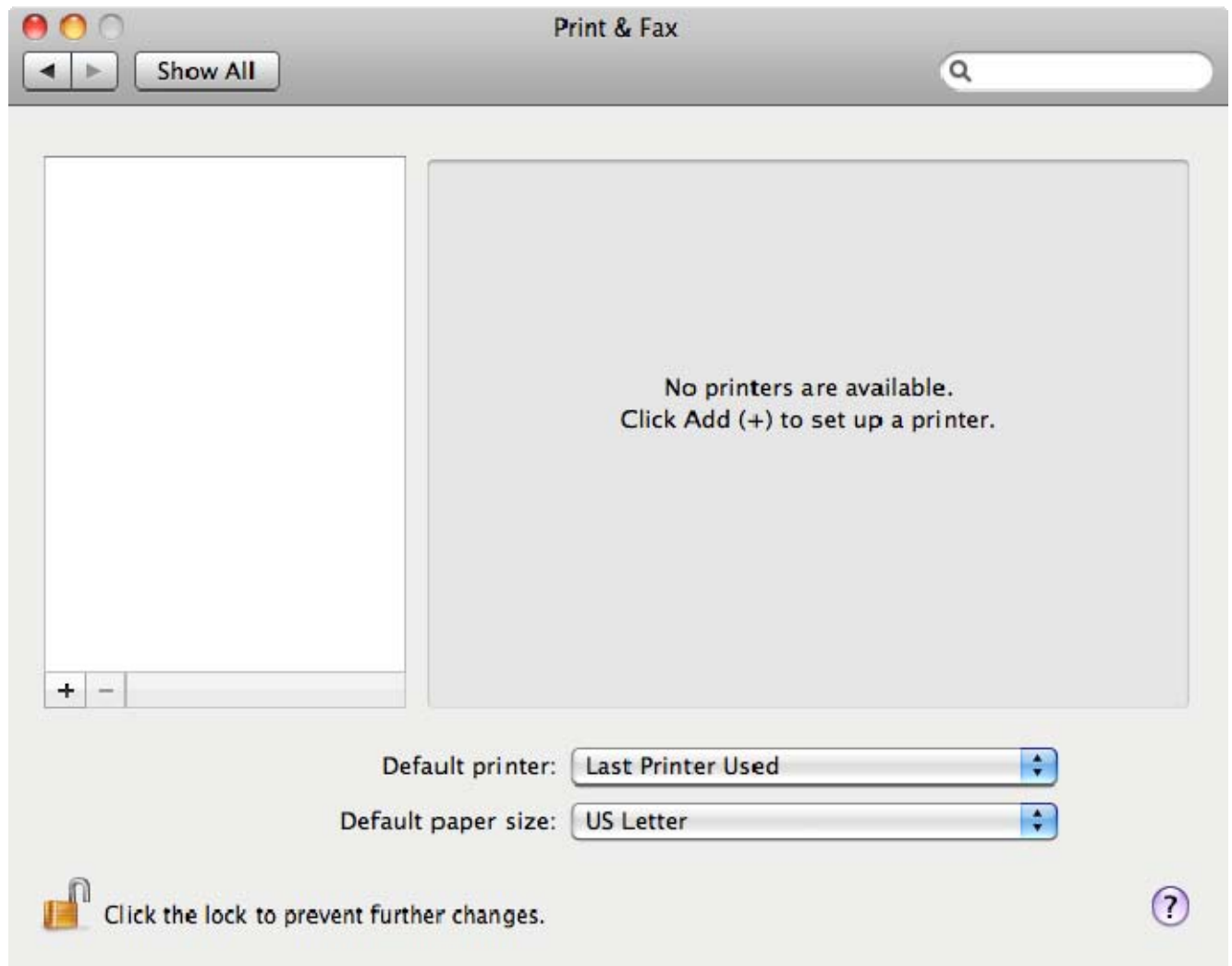
2. Download the appropriate printer driver from <http://library.law.utoronto.ca/wireless-printing> (save the file to your computer).
3. Run the downloaded file to open the disk image, then run the installer to install the drivers.
4. Click the **Apple menu** and select **System Preferences...**



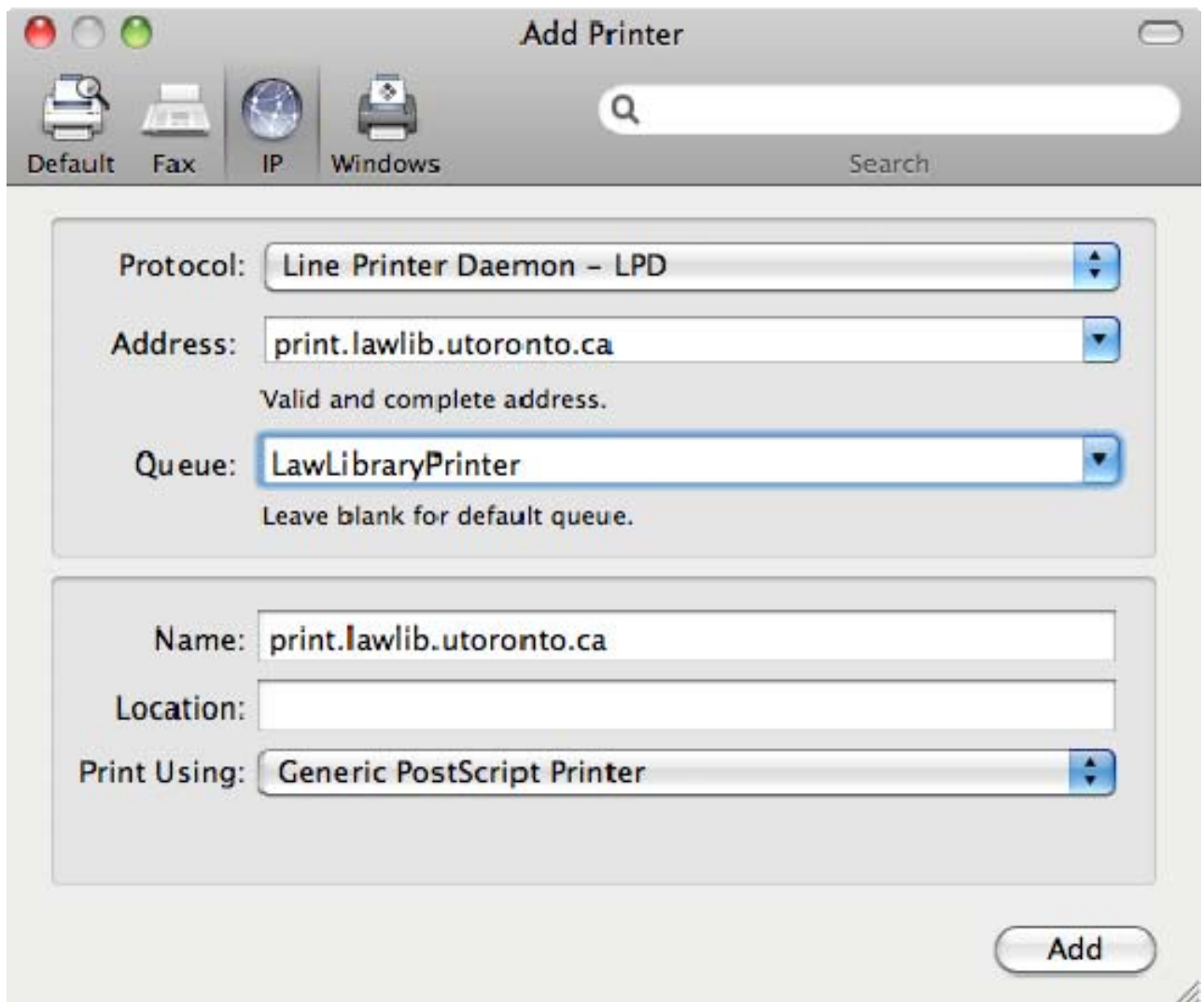
5. Click **Print & Fax** (or **Print & Scan**, depending on your version of OS X).



6. Click the **+** (*plus sign*) to add a printer.



7. Select the **IP** tab at the top and **Line Printer Daemon – LPD** in the **Protocol** field (if not already selected), then enter **print.lawlib.utoronto.ca** for **Address** and **LawLibraryPrinter** for **Queue**.

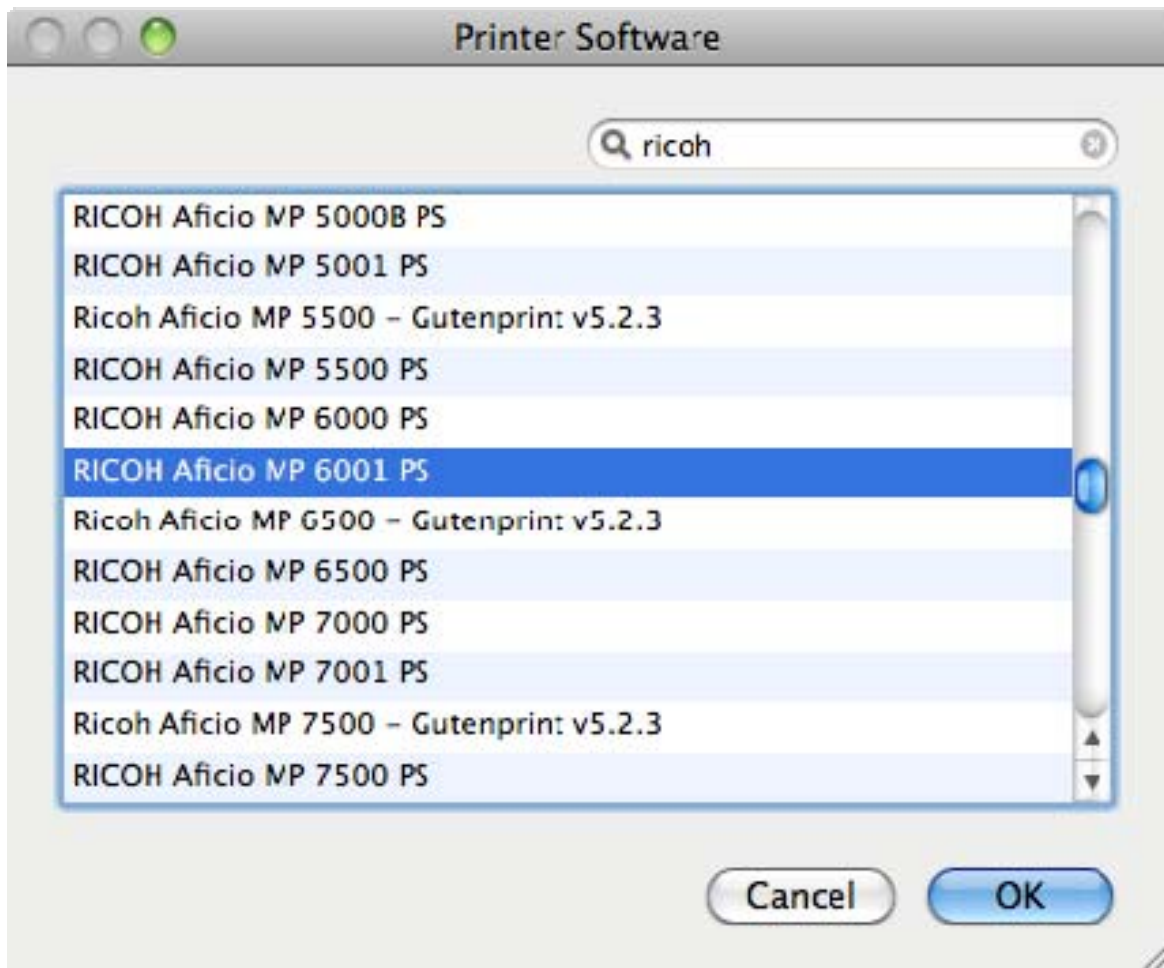


8. For **Print Using** (or **Use**, or **Using**), choose **Select Printer Software....**

- Auto Select
- ✓ Generic PostScript Printer
- Generic PCL Laser Printer
- Select Printer Software...

Other...

9. Select **RICOH Aficio MP 6001 PS** (you can start typing it into the search box to help find the correct driver), then click the **OK** button.



10. Click the **Add** button.

**Add Printer**

Default Fax IP Windows Search

Protocol: Line Printer Daemon - LPD

Address: print.lawlib.utoronto.ca  
Valid and complete address.

Queue: LawLibraryPrinter  
Leave blank for default queue.

Name: print.lawlib.utoronto.ca

Location:

Print Using: RICOH Aficio MP 6001 PS

Add

11. On the **Installable Options** page, select **Installed** for **Large Capacity Tray** (leave all of the other fields set to **Not Installed**), then click the **Continue** button.

Installable Options  
print.lawlib.utoronto.ca

Make sure your printer's options are accurately shown here so you can take full advantage of them. For information on your printer and its optional hardware, check the documentation that came with it.

Large Capacity Tray:

Finisher:

Booklet Processor:

Mailbox:

Multi-hole Punch Unit:

Folding Unit:

12. When you see the printer listed in the **Print & Fax** (or **Print & Scan**) window, you can quit **System Preferences**.

